



# Wind Hardware

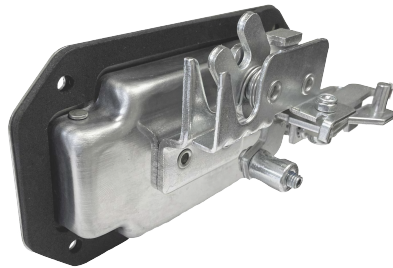
TRUSTED PARTNERS FOR RELIABLE PARTS

## Improve the performance of your truck body and toolbox with our premium grade, durable and highly secure latches and handles

Wind Hardware offers a full line of handles and latches for the most demanding needs of truck body and toolbox manufacturers. From styles, materials, sizes and price points, Wind Hardware has what you need, backed by 72 years of experience.

### PREMIUM LOCKING & NON-LOCKING ROTARY LATCHES

### PREMIUM LOCKING & NON-LOCKING T-HANDLES



#### Features & Benefits

- Salt spray tested per ASTM D610 for corrosion resistance and longer life
- 10,000 cycle testing for exceptional reliability
- Locking & non-locking designs for any need
- 10 key codes for greater security
- Locked and unlocked etching for verification
- Pilot rod indicator for easy assembly
- 200 lbs. static pull test in lockout position for theft prevention
- Zinc plating for corrosion resistance and aesthetics

#### Features & Benefits

- 200 key codes for improved security
- Locking & non-locking designs for any need
- 90-degree handle rotation for use with locking/latching options
- Dust shutter keyhole covering for improved sealing performance and longer life
- Black powder coated steel for excellent scratch and corrosion resistance

